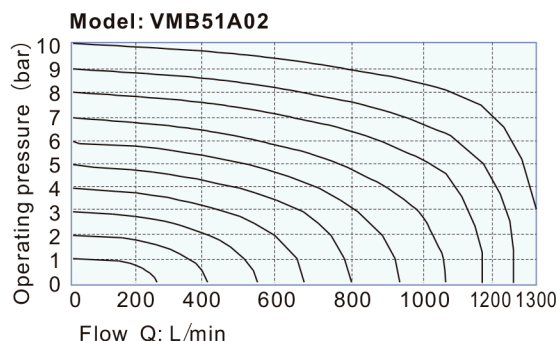
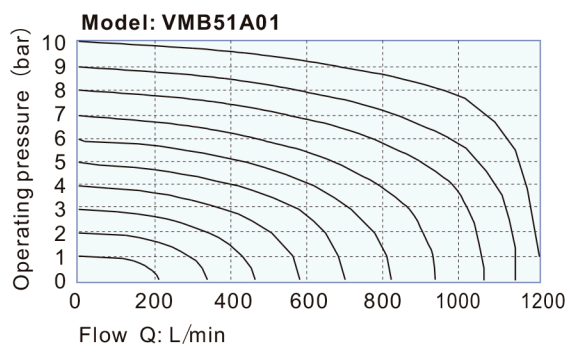
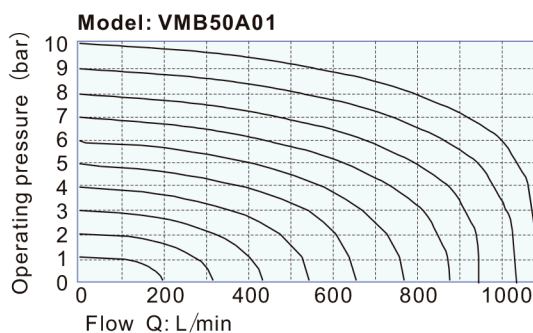
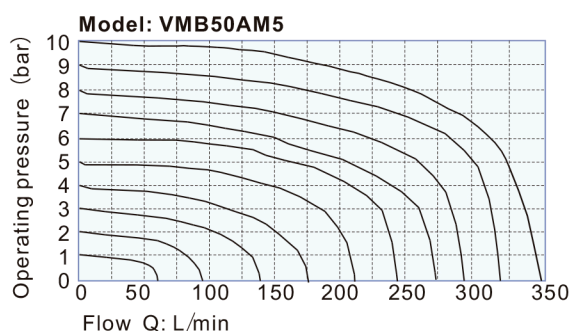




## Specification

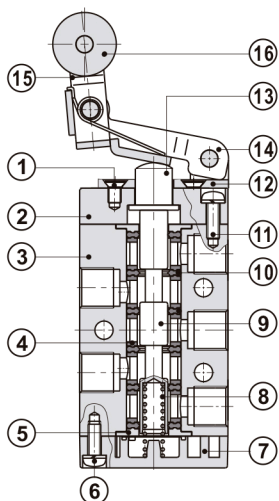
| Valve              | VMB   | VMC | VMD | VMY | VMR | VML | VMPL | VMPP | VMPF | VMPM | VMHS |
|--------------------|---|-----|-----|-----|-----|-----|------|------|------|------|------|
| Fluid              | Air(to be filtered by 40μm filter element)  |     |     |     |     |     |      |      |      |      |      |
| Acting             | External control direct acting type   |     |     |     |     |     |      |      |      |      |      |
| Port size          | M5:M5; 01:1/8"G; 02:1/4"G   |     |     |     |     |     |      |      |      |      |      |
| Valve type         | 5 port 2 position   |     |     |     |     |     |      |      |      |      |      |
| Lubrication        | Not required  |     |     |     |     |     |      |      |      |      |      |
| Operating pressure | 0~10bar(0~145psi)   |     |     |     |     |     |      |      |      |      |      |
| Proof pressure     | 15bar(215psi)   |     |     |     |     |     |      |      |      |      |      |
| Temperature °C     | -20~70  |     |     |     |     |     |      |      |      |      |      |
| Orifice size       | 50AM5:2.5 mm <sup>2</sup> Cv≦0.14); 50A01:8.0 mm <sup>2</sup> Cv≦0.45); 51A01:9.0 mm <sup>2</sup> Cv≦0.50); 51A02:12.0 mm <sup>2</sup> Cv≦0.67) |     |     |     |     |     |      |      |      |      |      |
| Material of body   | Aluminum alloy  |     |     |     |     |     |      |      |      |      |      |

## Flow chart



## Inner structure

### VMR51A



| No.  | Item              |
|------|-------------------|
| (1)  | Screw             |
| (2)  | Fore cover        |
| (3)  | Body              |
| (4)  | Spacer            |
| (5)  | Positioning block |
| (6)  | Screw             |
| (7)  | Bottom cover      |
| (8)  | Spring            |
| (9)  | Spool             |
| (10) | Piston O-ring     |
| (11) | Screw             |
| (12) | Roller holder     |
| (13) | Axle              |
| (14) | Rotating block    |
| (15) | Rocker            |
| (16) | Roller            |

## VM□5 SERIES

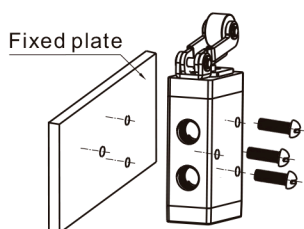
## Reversal stroke

| Type  | Spool stroke | Button stroke | Type | Spool stroke | Roller(handle) stroke | Type   | Spool stroke | Roller stroke |
|-------|--------------|---------------|------|--------------|-----------------------|--------|--------------|---------------|
| VMB5  | 2.0~3.3      | -             | VMR5 | 2.0~3.0      | 4.6~6.8               | VMB5M5 | 2.0~3.3      | -             |
| VMPP5 | 2.0~3.3      | 3.8~5.1       | VML5 | 2.0~3.0      | 5.0~7.8               | VMR5M5 | 2.0~3.0      | 6.0~8.5       |
| VMPP5 | 2.0~3.3      | 3.8~5.1       | VMC5 | 2.0~3.0      | 11.0~16.0             | VML5M5 | 2.0~3.0      | 7.0~10.0      |
| VMPM5 | 2.0~3.3      | 3.8~5.1       | VMD5 | 2.0~3.0      | 5.5~8.0               |        |              |               |
| VMPL5 | 2.0~3.3      | 5.9~7.2       |      |              |                       |        |              |               |
| VMHS5 | 2.0~3.3      | 5.1~6.4       |      |              |                       |        |              |               |

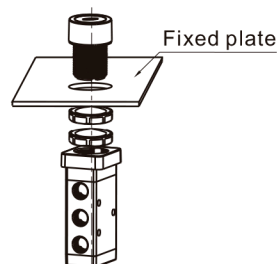
## Assemble chart

## Attentions

- 1)The control set is made of engineering plastic which only allows manual operation and switching valves through metal impact is forbidden.
- 2)The series of VMB5, VMC5, VMD5,VMPM5, VMPP5 and VMPL5 get the function of automatic restoration. The hand valves of VMY5, VMHS5 and VMPL5 are in the type of manual restoration. VMPL5 will be restored by turning the revolve button after being pressed into orientation.
- 3) Pay attention to the reversing stroke. The reversing stroke can not surpass its stroke stipulated in stroke control table when the direction -change of the valve is forced by any external forces, otherwise it will cause the damage of the valve.
- 4) The VML5 can only switch the valve in single direction (impact from right to left). The impact from the other direction is invalid (from left to right).
- 5) Control joint combination can be ordered individually. Please refer to the table on the right for order details.



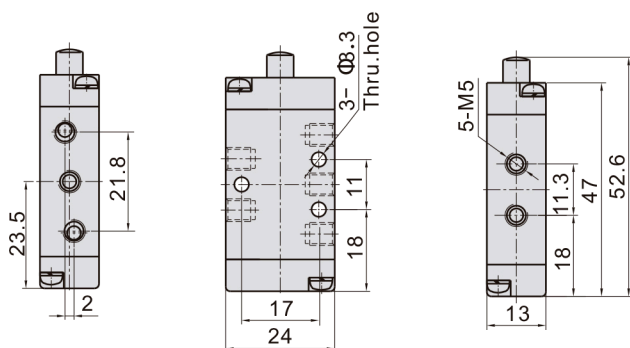
Fixation way of body



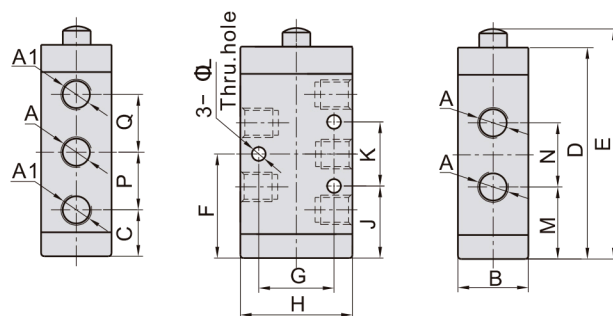
Fixation way of panel

## Dimensions

## VMB50AM5



## VMB50A01\VMB51A01\VMB51A02



| Model\Item | A     | A1    | B  | C    | D    | E    | F    | G    |
|------------|-------|-------|----|------|------|------|------|------|
| VMB50A01   | 1/8"G | 1/8"G | 18 | 15   | 57.5 | 63   | 29   | 18   |
| VMB51A01   | 1/8"G | 1/8"G | 22 | 14.5 | 66   | 71.8 | 32.5 | 23.5 |
| VMB51A02   | 1/4"G | 1/8"G | 22 | 14.5 | 66   | 71.8 | 32.5 | 23.5 |

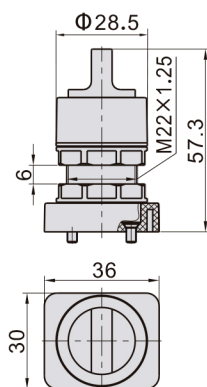
  

| Model\Item | H  | J    | K  | L   | M    | N  | P  | Q  |
|------------|----|------|----|-----|------|----|----|----|
| VMB50A01   | 27 | 22   | 14 | 3.3 | 21   | 16 | 14 | 14 |
| VMB51A01   | 35 | 22.5 | 20 | 4.3 | 22.5 | 20 | 18 | 18 |
| VMB51A02   | 35 | 22.5 | 20 | 4.3 | 22.5 | 20 | 18 | 18 |

**Model: HS(Selector Type)**

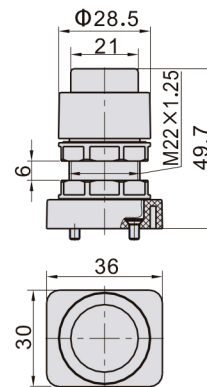
| Ordering code       | Type                                  |
|---------------------|---------------------------------------|
| VMHSM5-P11A         | VMHS selector type control set Green) |
| VMHSM5-P12A         | VMHS selector type control set Red)   |
| VMHSM5-P13A         | VMHS selector type control set Black) |
| Applicable products | VMHS 50, VMHS 51                      |

Dimensions

**Model: PP(Protruding Type)**

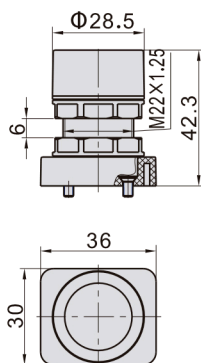
| Ordering code       | Type                                    |
|---------------------|---|
| VMPPM5-P11A         | VMPP protruding type control set Green) |
| VMPPM5-P12A         | VMPP protruding type control set Red)   |
| VMPPM5-P13A         | VMPP protruding type control set Black) |
| Applicable products | VMPP50, VMPP51                          |

Dimensions

**Model: PF(Flat Type)**

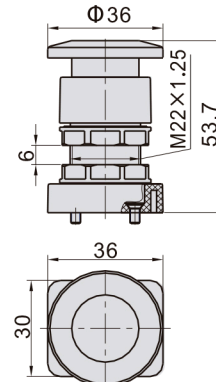
| Ordering code       | Type                              |
|---------------------|-----------------------------------|
| VMPFM5-P11A         | VMPF flat type control set Green) |
| VMPFM5-P12A         | VMPF flat type control set Red)   |
| VMPFM5-P13A         | VMPF flat type control set Black) |
| Applicable products | VMPF50, VMPF51                    |

Dimensions

**Model: PM(Mushroom Type)**

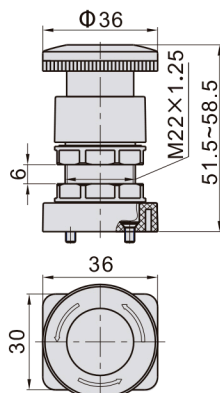
| Ordering code       | Type                                  |
|---------------------|---------------------------------------|
| VMPMM5-P11A         | VMPM mushroom type control set Green) |
| VMPMM5-P12A         | VMPM mushroom type control set Red)   |
| VMPMM5-P13A         | VMPM mushroom type control set Black) |
| Applicable products | VMPM50, VMPM51                        |

Dimensions

**Model: PL(Latching Type)**

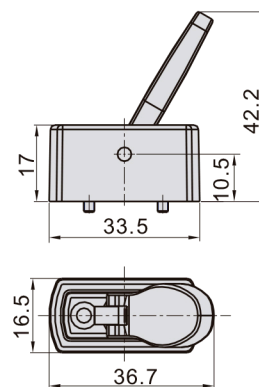
|                     |                                     |
|---------------------|-------------------------------------|
| Ordering code       | VMPLM5-P12A                         |
| Type                | VMPL Latching type control set Red) |
| Applicable products | VMPL50, VMPL51                      |

Dimensions

**Model: Y(Lever Type)**

|                     |                            |
|---------------------|----------------------------|
| Ordering code       | VMY31-P13A                 |
| Type                | VMY Lever type control set |
| Applicable products | VMY50, VMY51               |

Dimensions



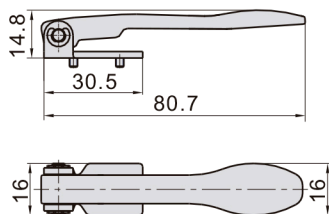


Control set dimensions

**Model: C(Long Handle Type)**

|                     |                                    |
|---------------------|------------------------------------|
| Ordering code       | VMC31-P13A                         |
| Type                | VMC31 Long handle type control set |
| Applicable products | VMC50, VMC51                       |

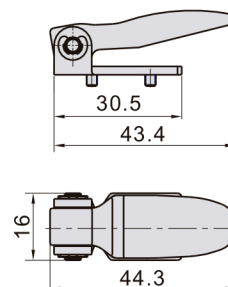
Dimensions



**Model: D(Short Handle Type)**

|                     |                                     |
|---------------------|-------------------------------------|
| Ordering code       | VMD31-P13A                          |
| Type                | VMD31 Short handle type control set |
| Applicable products | VMD50, VMD51                        |

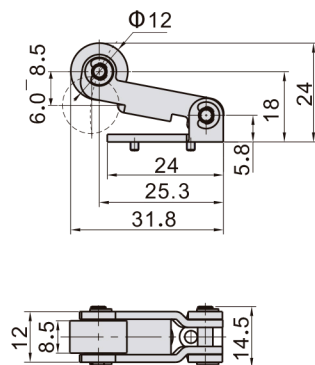
Dimensions



**Model: R(Roller Type for M5)**

|                     |                               |
|---------------------|-------------------------------|
| Ordering code       | VMRM5-P14A                    |
| Type                | VMRM5 Roller type control set |
| Applicable products | VMR50AM5                      |

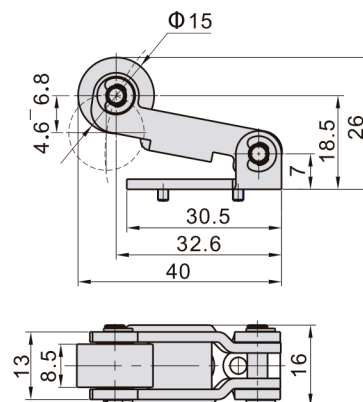
Dimensions



**Model: R(Roller Type for 01, 02)**

|                     |                               |
|---------------------|-------------------------------|
| Ordering code       | VMR31-P14A                    |
| Type                | VMR31 Roller type control set |
| Applicable products | VMR50A01, VMR51               |

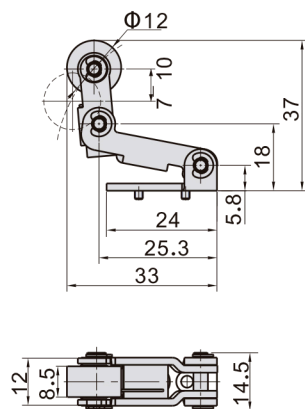
Dimensions



**Model: L(Roller With Free Return Type for M5)**

|                     |  |
|---------------------|--|
| Ordering code       | VMLM5-P14A                                     |
| Type                | VMLM5 Roller with free return type control set |
| Applicable products | VML50M5  |

Dimensions



**Model: L(Roller With Free Return Type for 01,02)**

|                     |  |
|---------------------|--|
| Ordering code       | VML31-P14A                                     |
| Type                | VML31 Roller with free return type control set |
| Applicable products | VML50A01, VMD51                                |

Dimensions

